

C 28

STEREO PRE-AMPLIFIER

McIntosh

The Compendium



FRONT PANEL: Glass with illuminated teal/gold nomenclature. Concentric BALANCE: L TO R, / COMP: PRES, FLAT LOUD. INPUT SELECTOR (with indicator lights): AUX, TUNER, PHONO 1, and PHONO 2, MIC, TAPE HD. MODE SELECTOR (with indicator lights): L TO L+R, R TO L+R, STEREO REVERSE, STEREO, MONO (L+R), L+R TO L and L+R TO R. VOLUME with on-OFF switch. ↗ BASS controls: LEFT and RIGHT. Pushbutton switches: MONITOR: TAPE 1 IN or OUT, TAPE 2 IN or OUT, TAPE COPY: 1→2, TAPE COPY: 2→1. FILTERS: LF IN or OUT, HF: IN or OUT, SPEAKER OFF: MAIN and REMOTE. TAPE INPUT jack. TAPE OUTPUT jack. HEADPHONES jack. TREBLE controls: LEFT and RIGHT.



BACK PANEL: AC outlets: 2 POWER AMP (switched at top panel), 1 UNSWITCHED, 4 SWITCHED (at front panel). Power cord. FUSE. ↗ MAIN OUTPUTS (2 pair): L, center, R. SPEAKER CONTROL RELAY socket. ↗ Left and Right LINE OUTPUT. TAPE 1 and TAPE 2 Left and Right OUTPUTS. ↗ HIGH LEVEL INPUTS: AUX, TUNER, TAPE 1, TAPE 2. GROUND binding post. LOW LEVEL INPUTS: Tape HEAD, MIC, PHONO 1 and PHONO 2. Panloc mounting.



TOP PANEL: LEFT and RIGHT BASS trim. LEFT and RIGHT PHONO 1 and PHONO 2 LEVEL controls. LEFT and RIGHT HEADPHONES LEVEL controls. LEFT and RIGHT OUTPUT LEVEL controls. CENTER CHANNEL LEVEL control. POWER AMPLIFIER switch: OFF or ON.

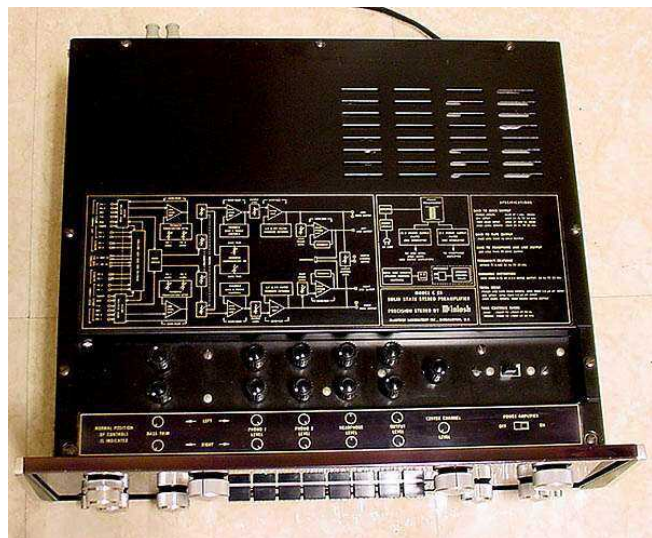
SPECIFICATIONS: Response 20-20kHz (+0 -0.5dB). Distortion 0.1%. Noise and hum - 90dB aux, -78dB phono. Output rated 2.5V. Output impedance 100 ohms. Load impedance 47k. Input sensitivity & impedance: aux 0.25V at 250k, 2mV at 47k, mic 2.5mV at 500k. Tone controls: bass +20dB to -20dB, treble +18 to -18dB. Center channel output 1.25V. Headphone amplifier 0.75V at 8 ohms. LF filter 50Hz at 12dB/octave. HF filter 7kHz at 12dB/octave. Bass trim controls boost up to 6dB below 100Hz. Voltage gain 20dB aux, 62dB phono.

C 28

STEREO PRE-AMPLIFIER

McIntosh

The Compendium



C 28 - Sold from January 1970 - December 1978. S/N: 10X01~99X99, AK1001~AK9999 & AS1001~AS4957 (21,764 UNITS)

Size 5-7/16"H, 16"W and 13"D behind panel. Weight 25 lb. **\$649.00**